

# DID YOU KNOW?



## about our... Galvanised Timber Connectors

### Applications

Timber connections in:

- Flooring support beams
- Decking systems
- Roofing structures
- Pergolas
- Fencing
- Masonry to timber



▶ Joist hanger timber Pg.1



▶ Multi-grips timber Pg.2





▶ Triple Grips Pg.2



▶ Triple Grips Pg.2



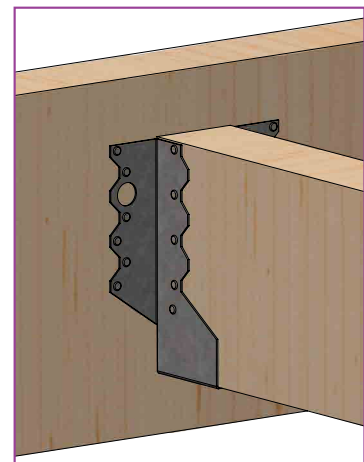
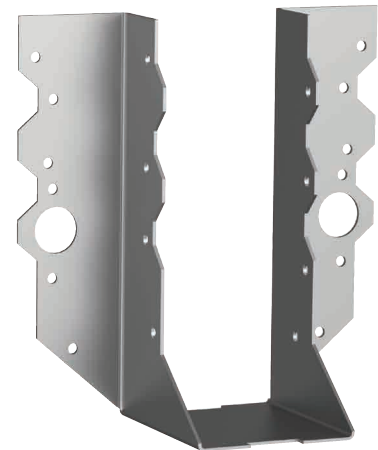
▶ Cyclone Strap Tie Down Pg.3

<b>Material</b>		<b>G300 Roll Formed Structural Steel</b>
<b>Finish</b>		<b>Galvanised Z275</b> Minimum 275 GM per square metre. Equates to a minimum thickness of 20 µm per side.

## JOIST HANGER

### JOIST HANGER TIMBER GALVANISED / HEC

Part	QFind	Width	Length	Thickness	Pack
		(mm)	(mm)	(mm)	
HHJMGD-035090	<b>GD-035090</b>	35	90	1	50
HHJMGD-035120	<b>GD-035120</b>	35	120	1	20
HHJMGD-035190	<b>GD-035190</b>	35	190	1	20
HHJMGD-045090	<b>GD-045090</b>	45	90	1	50
HHJMGD-045120	<b>GD-045120</b>	45	120	1	20
HHJMGD-045140	<b>GD-045140</b>	45	140	1	20
HHJMGD-045190	<b>GD-045190</b>	45	190	1	20
HHJMGD-050090	<b>GD-050090</b>	50	90	1	50
HHJMGD-050120	<b>GD-050120</b>	50	120	1	20
HHJMGD-050140	<b>GD-050140</b>	50	140	1	20
HHJMGD-050190	<b>GD-050190</b>	50	190	1	20



Bolt Tension | Anti-Vibration | Product Reliability | Traceability

[hobson.com.au](http://hobson.com.au) **QUALITY FASTENERS SINCE 1935**



# DID YOU KNOW?

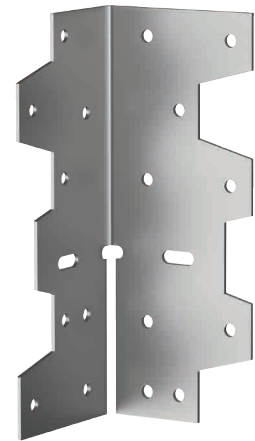
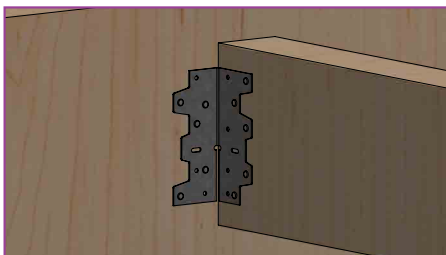


about our... **Galvanised Timber Connectors**

## MULTI GRIPS

### MULTI-GRIP TIMBER GALVANISED / HEC

Part	Width (mm)	Length (mm)	Thickness (mm)	Pack
HGMMGD	40	95	1	100



## TRIPLE GRIPS

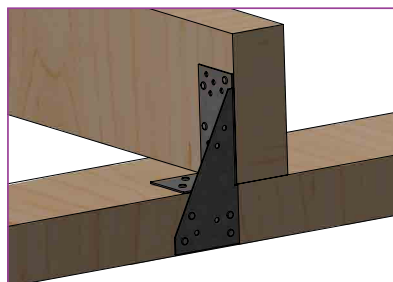
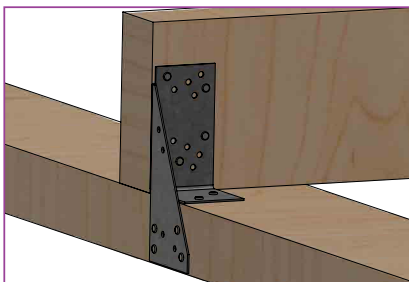
### TRIPLE GRIP TIMBER- RIGHT HAND GALVANISED / HEC

Part	Width (mm)	Length (mm)	Thickness (mm)	Pack
HGTMGR	50	113	1	100



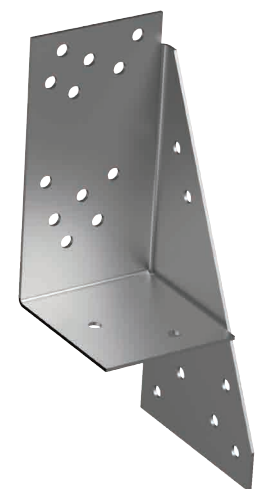
### TRIPLE GRIP TIMBER- LEFT HAND GALVANISED / HEC

Part	Width (mm)	Length (mm)	Thickness (mm)	Pack
HGTMGL	50	113	1	100



» Triple Grip Timber- Right Hand

» Triple Grip Timber- Left Hand





# DID YOU KNOW?

about our... **Galvanised Timber Connectors**

## CYCLONE STRAP TIE DOWN

### CYCLONE STRAP TIE DOWN GALVANISED / HEC / PUNCHED

Part	QFind	Width (mm)	Length (mm)	Thickness (mm)	Pack
GSCMG12P400	<b>CS400</b>	25	382	1.2	100
GSCMG12P600	<b>CS600</b>	25	567	1.2	50

