





PRODUCT DATA

Metal Flat Head Screw SS304

Aluminium - Self-Drilling Screw (SDS) #10-16

Applications	
<ul style="list-style-type: none"> • Backpan fixing to aluminium framing • Aluminium cladding cassettes to aluminium subframe 	

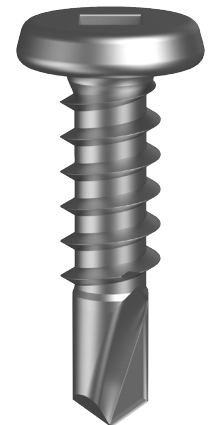
Material	 304 Stainless
-----------------	---

Finish	 304 Stainless
---------------	--

Pullout Values				
Plate	Metal Plate Thickness	¹ Mean Load	² Characteristic Load	³ Working Load
	(mm)	(N)	(N)	(N)
Aluminium	1.2	950	850	350
	3.0	3650	2750	1100

Note: for self-drilling into aluminium only.

10 Gauge Flat Head



Mechanical Properties				
Torsional Strength	Mean Tensile Strength	¹ Mean Shear Strength	² Characteristic Tensile Strength	² Characteristic Shear Strength
(Nm)	(N)	(N)	(N)	(N)
5.5	7700	4600	7600	4550

Note: 1000N = 1kN

¹ Mean Load/Strength: the average ultimate strength of samples tested.

² Characteristic Load/Strength: 95% of these screws are expected to have a strength greater than the loads shown.

³ Working Load: the governing minimum allowable load obtained by comparing relevant concrete and steel working loads. Factors of Safety (FOS = 2.5 for steel, aluminium and timber, and FOS = 3.0 for concrete) are already included.

All values are obtained under laboratory conditions using DRILLX product. Safety factors should be considered for design purposes. Actual pullout loads may differ slightly depending on certain properties of the base material.

Disclaimer: while every reasonable effort has been made to ensure that this document is correct at the time of printing, Hobson Engineering®, its agencies and employees disclaim all liability in respect to anything or the consequences of anything done or omitted regarding the whole or any part of this document.



Bolt Tension | Anti-Vibration | Product Reliability | Traceability

hobson.com.au **QUALITY FASTENERS SINCE 1935**

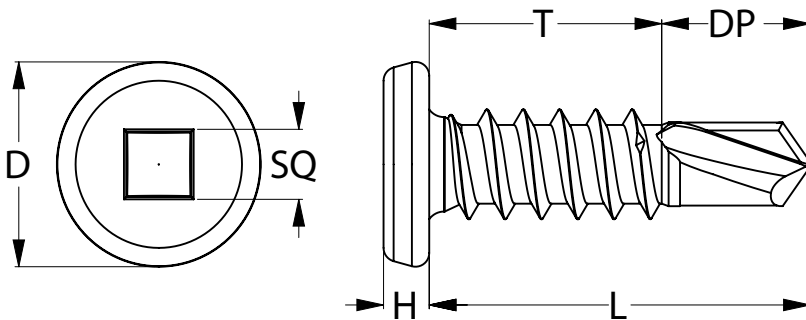




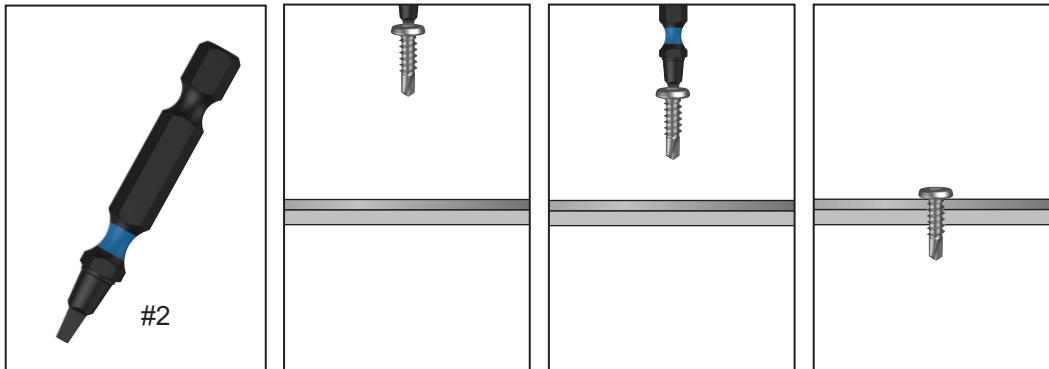
PRODUCT DATA

Metal Flat Head Screw SS304

Part	QFind	Gauge	TPI	Length	Thread Length	Drill Point Length	Head Height	Head ø	Drive Size	Pack Qty
				L (mm)	T (mm)	DP (mm)	H (mm)	D (mm)	SQ	
T04MSLQ1016016	QT113	10	16	16.0	9.8	5.5	2.0	9.5	Square #2	1000



Installation



Recommended
Hobson Square #2 Drive Bit:

Part	QFind	Length (mm)
TXDIPSQS20050	B371	50
TXDIPSQS20100	B375	100
TXDIPSQS20150	B380	150

Installation Guide

1. Use a cordless screw driver set between 2,200-3,000 RPM. Fit the Square Drive Bit over the screw and place at the fastening position.
2. Consistently apply firm pressure to the screw driver while drilling.
3. Take care not to overtighten the screw.

*Installation with impact drivers not recommended.

Disclaimer: while every reasonable effort has been made to ensure that this document is correct at the time of printing, Hobson Engineering®, its agencies and employees disclaim all liability in respect to anything or the consequences of anything done or omitted regarding the whole or any part of this document.

Bolt Tension | Anti-Vibration | Product Reliability | Traceability

hobson.com.au **QUALITY FASTENERS SINCE 1935**

