



# PRODUCT DATA

## Suspension Sleeve Anchor

A pre-assembled tie wire sleeve anchor for the purpose of suspending ceilings, attaching cable ties and other suspension applications.

Applications
<ul style="list-style-type: none"> <li>• Concrete</li> <li>• Solid Brick</li> <li>• Stone</li> <li>• Concrete Block</li> </ul>

### Zinc Yellow Passivate

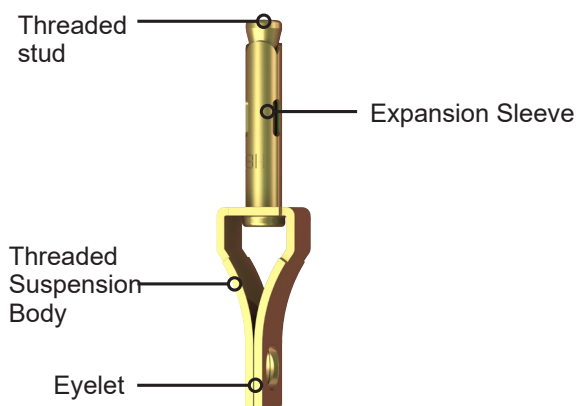
<b>Material</b>	 Carbon Steel
-----------------	------------------------------------------------------------------------------------------------

<b>Finish</b>	 Zinc Yellow Passivate
---------------	----------------------------------------------------------------------------------------------------------



Part	Concrete Strength	Embedment Depth	Min. spacing	Min. edge distance	Working Load in tension <sup>1</sup>
	(MPa)	(mm)	(mm)	(mm)	(kN)
MSAMSYM060025	32	20	60	30	1.1
MSAMSYM060035	32	25	75	38	1.3

1. Working load is the governing minimum allowable load obtained by comparing relevant concrete and steel working loads. Factor of Safety (FOS=2.5 for steel and FOS=3.0 for concrete) are already included.



### Features

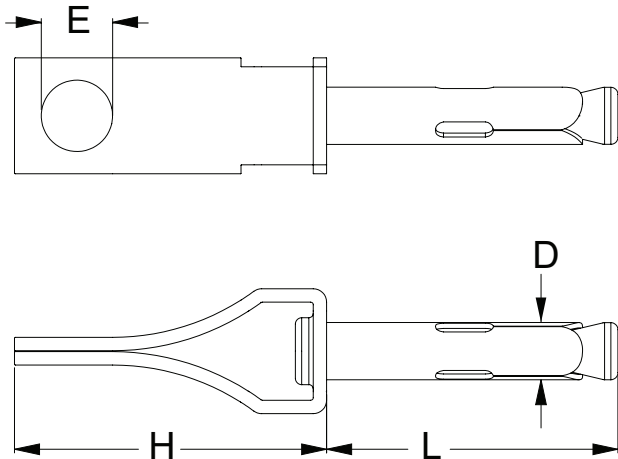
- Threaded suspension body
- 8mm eyelet
- No installation tool required – turn the suspension body of the anchor to expand the sleeve.

Disclaimer: While every reasonable effort has been made to ensure that this document is correct at the time of printing, Hobson Engineering, its agencies and employees, disclaim any and all liability to any person in respect of anything or the consequences of anything done or omitted to be done in reliance upon the whole or any part of this document.



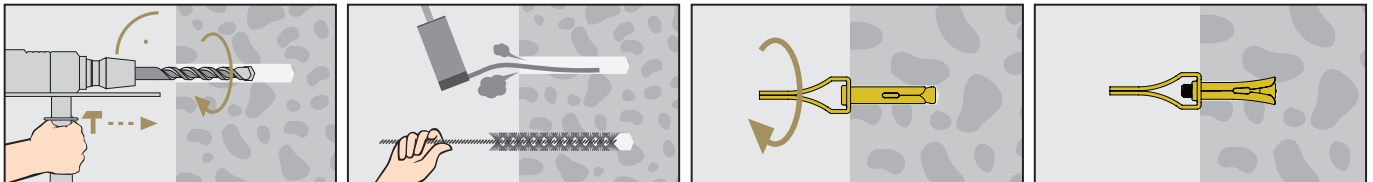
# PRODUCT DATA

## Suspension Sleeve Anchor



Part	QFIND	Size	Length	Drill Hole $\varnothing$	Min. Drill Depth	Eye Diameter	Head Height	Pack Qty
			L (mm)	D (mm)	(mm)	E (mm)	H (mm)	
MSAMSYM060025	MSA100	M6	25	6.5	25	8	35	100
MSAMSYM060035	MSA101	M6	35	6.5	35	8	35	100

### Installation



#### Installation Guides

As per the images shown.

Once the anchor is in place, twist and tighten suspension body to expand the sleeve which will ensure locking mechanism.

Disclaimer: While every reasonable effort has been made to ensure that this document is correct at the time of printing, Hobson Engineering, its agencies and employees, disclaim any and all liability to any person in respect of anything or the consequences of anything done or omitted to be done in reliance upon the whole or any part of this document.

Bolt Tension | Anti-Vibration | Product Reliability | Traceability

[hobson.com.au](http://hobson.com.au) **QUALITY FASTENERS SINCE 1935**