

# DID YOU KNOW?

about our...



**NEW  
PRODUCT**

## 316 Stainless Rivet Nut Reduced Head Round Knurl Open

### RIVET NUT REDUCED HEAD ROUND KNURL OPEN 316 STAINLESS / HEC

316



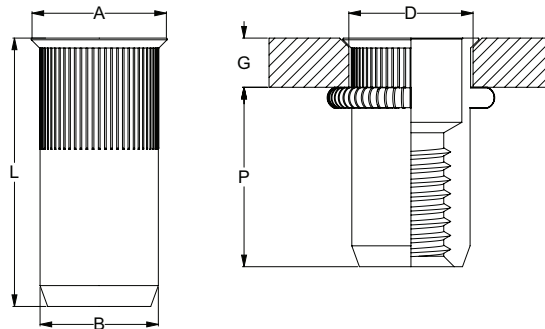
Part	Size	Length L (mm)	Grip Range		Hole Diameter D (mm)	Body Diameter B (mm)	Head Diameter A (mm)	Protrusion P (mm)
			Min.	Max.				
NR16PRKOM04105	M4	10.5	0.5	2.0	6	5.9	7	6.0
NR16PRKOM05115	M5	11.5	0.5	2.0	7	6.9	8	7.6
NR16PRKOM06140	M6	14.0	0.5	2.5	9	8.9	10	9.0
NR16PRKOM08165	M8	16.5	0.5	3.0	11	10.9	12	12.0

#### APPLICATIONS

- Used in the automotive industry to fasten body panels, chassis components and other parts
- Used in construction to fasten steel sheets
- Ideal for load-bearing applications where material is too thin for bolting
- Useful for applications where there is no access for a traditional nut

#### FEATURES

- Also called countersunk head, flush head or thin sheet type
- Knurled body to grip and prevent rotation
- Low-profile head allows near-flush fit to sheet metal



# DRILLX<sup>®</sup>



You can download this  
Test Certificate and/or  
Report from our website:

[hobson.com.au](http://hobson.com.au)

Disclaimer: while every reasonable effort has been made to ensure that this document is correct at the time of printing, Hobson Engineering®, its agencies and employees disclaim all liability in respect to anything or the consequences of anything done or omitted regarding the whole or any part of this document. HEC product marking is the manufacturing mark of Hobson Engineering. HEC is a registered trademark of Hobson Engineering.

Bolt Tension | Anti-Vibration | Product Reliability | Traceability

[hobson.com.au](http://hobson.com.au) **QUALITY FASTENERS SINCE 1935**



240905DYK