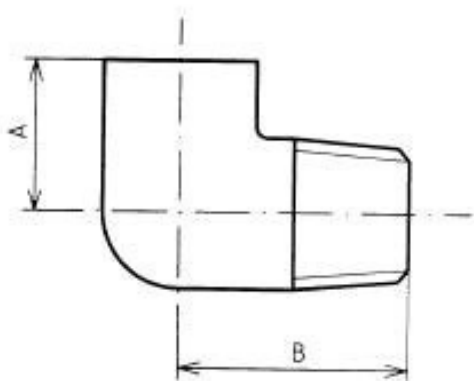


# M & F ELBOW 90°

## STEEL FITTINGS



PART NO.		DN SIZE (mm)	A (mm)	B (mm)	WEIGHT (kg)
BLACK STEEL	GAL STEEL				
BSEMF008	GSEMF008	8	19	27	0.10
BSEMF010	GSEMF010	10	21	29	0.09
BSEMF015	GSEMF015	15	25	35	0.19
BSEMF020	GSEMF020	20	30	40	0.22
BSEMF025	GSEMF025	25	37	46	0.38
BSEMF032	GSEMF032	32	43	54	0.63
BSEMF040	GSEMF040	40	49	57	0.87
BSEMF050	GSEMF050	50	59	70	1.40
BSEMF065	GSEMF065	65	68	83	2.28
BSEMF080	GSEMF080	80	81	94	2.77
BSEMF100	GSEMF100	100	100	115	4.85

MATERIALS	
Carbon Steel	0.25% Max C
Galvanising	HDG
Zinc Plating	EZP

SPECIFICATIONS
Thread
BSP to ISO 7-1
Cold Working Pressure
5000 kPa

STANDARD
Manufacturing
EN10241-2000