

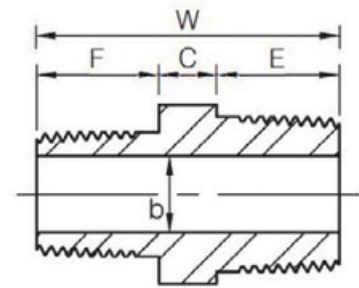
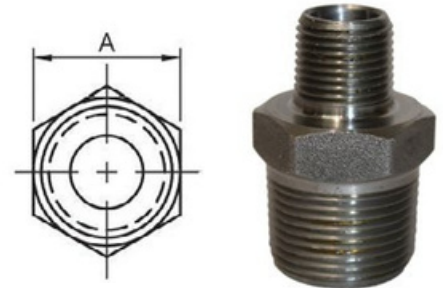
# HEX REDUCING NIPPLE & HEX REDUCING BUSH

**HIGH PRESSURE - CLASS 3000LB**

PART NO. HEX REDUCING NIPPLE	DN SIZE (mm)	A (mm)	W (mm)	E (mm)	B (mm)	C (mm)	F (mm)	WEIGHT (kg)
HPRN0806	8x6	15	31	15	5	6	10	0.03
HPRN1008	10x8	18	39	16	8	8	15	0.04
HPRN1508	15x8	22	43	20	8	8	15	0.08
HPRN1510	15x10	22	44	20	11	8	16	0.08
HPRN2010	20x10	27	46	21	11	9	16	0.12
HPRN2015	20x15	27	50	21	14	9	20	0.12
HPRN2515	25x15	35	55	25	14	10	20	0.24
HPRN2520	25x20	35	56	25	19	10	21	0.24
HPRN3225	32x25	46	66	26	24	15	25	0.39
HPRN4025	40x25	50	67	26	24	16	25	0.38
HPRN4032	40x32	50	68	26	30	16	26	0.38
HPRN5025	50x25	62	70	27	24	18	25	1
HPRN5032	50x32	62	71	27	30	18	26	1
HPRN5040	50x40	62	70	27	38	17	26	1

MATERIALS
Forged Carbon Steel
Also available in Hot Dipped Gal

SPECIFICATIONS
Thread
BSPT & NPT



STANDARD
Material
ASTM A105
Dimensional
ASME B16.11 & BS3799