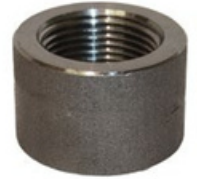
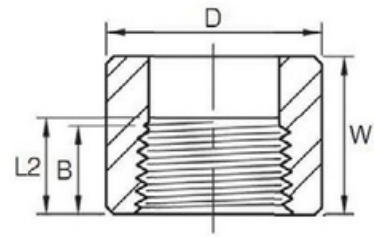


COUPLINGS & CAP

HIGH PRESSURE - CLASS 3000LB

PART NO. HALF CAP	DN SIZE (mm)	B (mm)	L2 (mm)	W (mm)	D (mm)	WEIGHT (kg)
HPHC008	8	8.1	10.2	17.5	19	0.03
HPHC010	10	9.1	10.4	19	22	0.03
HPHC015	15	10.9	13.6	24	28	0.06
HPHC020	20	12.7	13.9	25.5	35	0.11
HPHC025	25	14.7	17.3	30	44	0.23
HPHC032	32	17	18	33.5	57	0.37
HPHC040	40	17.8	18.4	39.5	64	0.54
HPHC050	50	19	19.2	43	76	0.7
HPHC065	65	23.6	28.9	46	92	1.13
HPHC080	80	25.9	30.5	54	108	1.68
HPHC0100	100	27.7	33	60.5	140	3.11



MATERIALS
Forged Carbon Steel
Also available in Hot Dipped Gal

SPECIFICATIONS
Thread
BSPT & NPT

STANDARD
Material
ASTM A105
Dimensional
ASME B16.11