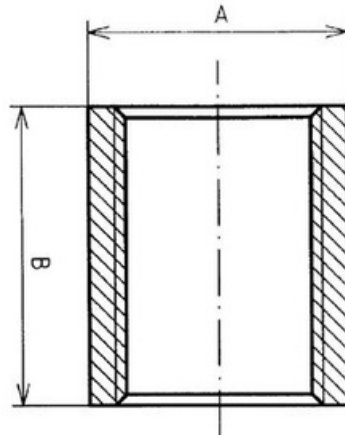


SOCKET

STEEL FITTINGS



PART NO.		DN SIZE (mm)	A (mm)	B (mm)	WEIGHT (kg)
BLACK STEEL	GAL STEEL				
BSS006	GSS006	6	15	19	0.01
BSS008	GSS008	8	18.5	27	0.03
BSS010	GSS010	10	22	28	0.04
BSS015	GSS015	15	27	37	0.07
BSS020	GSS020	20	32.5	39	0.11
BSS025	GSS025	25	39.5	46	0.16
BSS032	GSS032	32	49	51	0.25
BSS040	GSS040	40	56	51	0.32
BSS050	GSS050	50	68	60	0.48
BSS065	GSS065	65	84	69	0.70
BSS080	GSS080	80	98	75	0.96
BSS100	GSS100	100	124	87	1.84
BSS125	GSS125	125	151	96	2.42
BSS150	GSS150	150	177	96	3.53

MATERIALS	
Carbon Steel	0.25% Max C
Galvanising	HDG
Zinc Plating	EZP

SPECIFICATIONS
Thread
BSP to ISO 7-1
Cold Working Pressure
5000 kPa

STANDARD
Manufacturing
EN10241-2000